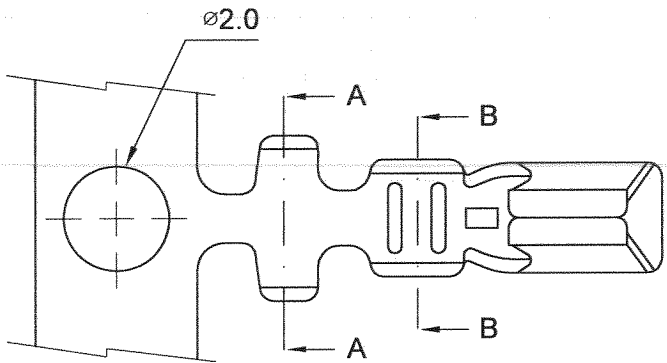
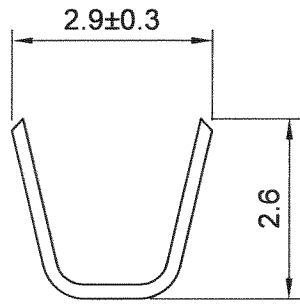
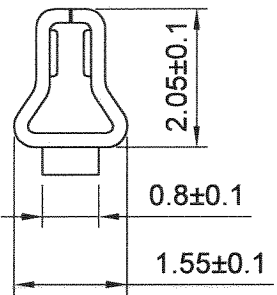
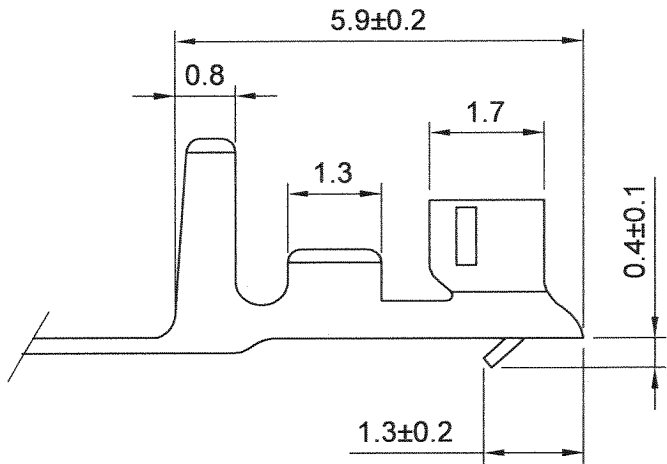


RoHS
Compliant
2002/95/EC

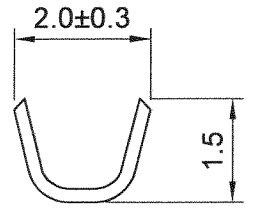


SPECIFICATIONS & ORDERING INFORMATION

THICKNESS : 0.2mm
 MATERIAL : PHOSPHOR BRONZE
 WIRE RANGE : AWG #22~30
 INSULATION O.D. : 1.6~1.13mm
 FINISH : TIN PLATED
 QTY/REEL : 10000 PCS
 USE WITH : 250C-xxP



SECTION A-A



SECTION B-B

JAWS 兆旭股份有限公司
JAWS CO., LTD.
 7F-1, NO.31, Lane 169, Kang Ning Street,
 Hsichih, Taipei Hsien, Taiwan.
 TEL: 886-2-2692-2898
 FAX: 886-2-2692-2618
 Http://www.jaws.com.tw

THIRD ANGLE PROJECTION		DESIGN UNITS <input checked="" type="checkbox"/> mm <input type="checkbox"/> INCH
SIZE: A4	SCALE: FREE	SHEET: 1/1
CPN NO.:		DWG NO.:
DAN NO.: S9802-026		JAWS-SOP-250C004

TITLE: 2.50mm CRIMP TERMINAL	
PARTS NO.: 250C-T	
DWG NO.:	REV.
JAWS-SOP-250C004	01

GENERAL TOLERANCES :	
X.X	± 0.25
X.XX	± 0.15

DRAWN	游熾瑩	DATE	98/02/19
CHECK	<i>Wang</i>	DATE	98.2.19
APPROVE	陳世隆	DATE	98.2.25